

**Donor of Two Fountains
to Des Moines Horses**



HERMON LEE ENSIGN.

The Iowa Humane society has received word that the superintendent of the Ensign fountain fund has decided to give two fountains to Des Moines and the big granite bowls of which they are composed are expected to arrive in time for the state fair. One will be located at Eighth and Cherry streets, the other at Grand and Penn avenues.

The estate of Hermon Lee Ensign was set aside by his will to be used in establishing drinking fountains for men, horses and dogs. A general type has been adopted and are being built in every city alike. Ottumwa, Davenport and Dubuque have been already given fountains.

Des Moines, IA 1906-08-05 Ensign donates 2 for Des Moines

Clipped By:



derbyct

Sun, Apr 5, 2020

ENSIGN FOUNTAIN IN PLACE

Gift To City From Ensign Estate in Philadelphia Will Be Ready for Use Within a Few Days.

The Herman Lee Ensign memorial fountain, given to the city by the Ensign estate of Philadelphia, has been placed in position at East Grand avenue and Penn avenue and the water will be connected up in a few days. The fountain is a beauty in construction. It is made of solid granite, and the bowl alone weighs over a ton. It is not only ornamental to that part of the city, but it is eminently useful. It affords drinking facilities for horses, dogs and people. The fountain cost over \$1,000, while the city is expending several hundred dollars to have it properly placed. A fountain identical in design and donated by the same estate will be placed at Eighth and Cherry streets soon.

Des Moines' first fountain 1906

Clipped By:



derbyct

Sun, Nov 10, 2019

THE DES MOINES REGISTER

The Ensign Fountain in Operation



HERMAN ESCH ESCHWIN.
The donor of the Ensign fountain and
founder of the National Ensign ad-
vertiser.

The two beautiful Ensign fountains located at East High and University streets and at West High and University streets were dedicated with the same simple ceremonies and with the same happy and happy people. The fountain at West High and University streets was dedicated with the same simple ceremonies and with the same happy and happy people. The fountain at East High and University streets was dedicated with the same simple ceremonies and with the same happy and happy people.

The fountain has just been set in place and is now in operation. It is a beautiful and useful structure and will be a great asset to the city of Des Moines.

The fountain was designed by the architect, Herman Esch Eschwin, and is a beautiful and useful structure. It is a beautiful and useful structure and will be a great asset to the city of Des Moines.

The fountain was designed by the architect, Herman Esch Eschwin, and is a beautiful and useful structure. It is a beautiful and useful structure and will be a great asset to the city of Des Moines.



THE BEAUTIFUL ENSIGN FOUNTAIN.

Ensign a Former Town.

The Ensign fountain was set in place and is now in operation. It is a beautiful and useful structure and will be a great asset to the city of Des Moines.

SHE KNEW EVELYN

and he had been at the same house on Saturday, Dec. 4. A copy of the Ensign will be the petting partner of the Ensign.

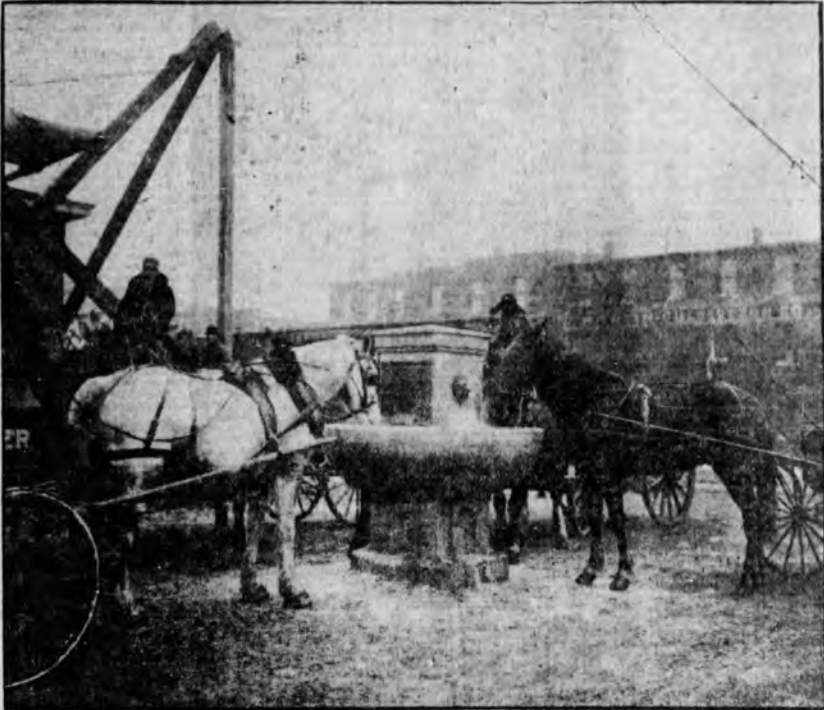
DM A - 8th & cherry DM B - Pennsylvania (aka 7th st) & Grand

Clipped By:



lunab916
Sat, Apr 10, 2021

A BOON TO THIRSTY ANIMALS



A group of thirsty horses stopping for a long, cool drink at one of the fountains installed by the humane society. This fountain, at Eighth and Cherry streets, is one of the two built with money donated by the Herman Lee Ensign estate.

ELKINS PRESENTS REPORT **DR. MIPASH SPEAKS** similar condition exists today. Some modern John the Baptist will come forth

DM A

Clipped By:



lunab916
Sat, Apr 10, 2021

to
ese
es,
ny
ell-
wa
ods

tered the patrol wagon and that Story prevented her from regaining it and also that he hit her over the head with his club.

÷ ÷ ÷

MUCH NEEDED IMPROVEMENT.—A brick pavement has just been put in around the Lee Ensign fountain at the corner of East Seventh and Grand avenue. Overflow from the fountain kept the ground around the base in such a condition that horses were compelled to wade in mud knee deep in order to get a drink. Teamsters who are in the habit of stopping at this trough will appreciate the improvement.

÷ ÷ ÷

LETTER FROM MRS. FRISBIE.—The August meeting of the Women's Mission

asi-
her

**e 7th & grand ensign trough - brick pavement - page 6 -
8/3/1907 Reg**

Clipped By:



pmwm
Wed, Feb 3, 2016

action of man-
sors by British
etc.
constantly in
representative
Denmark and
ed that all of
e steps to re-
hibited exports
spond with the
, thus making
of shipping to
ountries from
or the danger

Please.
ic impression
ere by the
plan. Bring
urther man-
of the Ameri-
sten a satis-
he differences
and seizure of

of the London
as the pre-
between. Am-
oreign Secre-
over several
ican note was
public was not
g the differ-
Keep now the
eral acknowl-
ition of the
ident Wilson
of search.
of the which
ention of the
ne to misap-
ever. In disap-
vant of the
itude of the

**S TAKE
CE BATTLE**
With 30,000
y From
es.

an J. Puck-
of Puck-
month ago by
ustiano Car-
om forces of
er a campaign
apture of Te-
to the south-
re ago.
ame after his
led as having
ombardment
force has re-
commanding
worked into a
ast night with
es, which are
ged not less
had determined
short as possi-
hile men into
fabling early

**PUBLIC FOUNTAINS
SENT TO CITY DUMP**

**Humane Society Finds Two Me-
morial Were Consigned
to Scrap Heap.**

BLAME STREET OFFICIALS

**Cowper Gift One of the Drink-
ing Places Torn Down
by Department.**

Somewhere upon the city dump
heap are two memorial drinking
fountains given to Des Moines for
erection upon his throughfare for
the benefit of man and beast. One,
costing \$1,500, was given through
the National Humane society under
the English bequest and the other,
costing a smaller amount, was the
gift to the city by Iwan and Mrs.
Holmes Cowper of two slaves in
memory of their very old and only
son.

The department of public streets
was held responsible for the de-
struction of this property by the
Jews Humane society in its annual
meeting yesterday afternoon in its
rooms in the court house. The larger
drinking fountain, which was one of
the two given to the city under the
English bequest, was located for years
at the corner of Four and Des Moines
streets. The Cowper memorial foun-
tain was erected about ten years ago
near the corner of Twentieth and
Cottage Grove avenue.

Sent to Dump Heap.
According to the report of the pub-
lic fountain committee made to the
sanity yesterday afternoon, when
inquiry was made at the city hall re-
garding the disposition of the foun-
tains the members were told that
they had been consigned to the pub-
lic dump because they overflowed
and the freezing water was danger-
ous to automobile traffic. Mrs. Cow-
per stated that the automatic control
of the water supply in the fountain,
which she and her husband had pre-
sented to the city, was removed by the
city workmen. They paid extra, she
said, for the device and later asked
for blue print drawing from the fac-
tory to prove this point.

The public fountain committee of
the Iowa Humane society, which in-
cludes James L. Callahan, Mrs.
Holmes Cowper and Alice Anna Finney,
was enlarged to include J. Q. Thompson,
and was instructed to confer
at once with the city council for the
restoration of these fountains. The
Iowa Humane society caused all of
POSTED ON PAGE 2, COLUMN 2

FLOUR QU
Best Paten
Ba
Brokers F
When
CHICAGO,
day not only
a stunning
flour. Top
flour were r
barrel as one
hours previe
barrel.
Second mo
for \$5.00 to
\$6.25 a bar
flour that r
barrel (not i
re). The re
vance in the
fact that we
ruman dema
wheel in 191
\$1.34), the
more than 1
Waves of
one change
lative up to
\$1.25 to \$1.2
the in a w
last night.
that the late
other step
—that the p
would go far
established
Latter deal
only based
ended that
just as much

**CARDINAL
PRIS**
Pastoral L
Church
C
AMSTERD
A dinner
from Hange
Marsker, pr
archbishop
racted by the
held a serm
Hans under
The report
confirmed, w
was the resu
amed by his
chancellor (fr
this the scri
ferred to the
as follows:
"This pope
and consens
four other
ords. The
Huguenot
king, his gov
mentative of

DM B found at dump

Clipped By:



lunab916
Sat, Apr 10, 2021

CITY IS SCRAPPING DRINK FOUNTAINS

Officers of the Iowa Humane society this morning protested against the removal of the memorial public drinking fountain on Eighth street below Cherry street. The objection was made to members of the city council.

The drinking fountain cost \$3,000 and was one of two given to the city by the National Humane society under the Ensign bequest. T. A. Mansfield, president of the society, said today he would oppose any effort to remove the fountain.

Last year the council removed the other Ensign memorial fountain and the memorial fountain erected at Twentieth street and Cottage Grove avenue by Dean and Mrs. Holmes Cowper in memory of their son who died in infancy.

The Ensign fountain was relocated at Tenth and Scott streets, but the officers for the humane society claim at least one of the other memorial fountains is somewhere on the city dump.

Des Moines scrapping fountains - 1915

Clipped By:



derbyct

Sun, Nov 10, 2019

AT S. E. 10TH AND SCOTT

Horse Trough Is Lone Survivor

By Lillian McLaughlin

The last of 15 watering troughs installed in Des Moines by the Humane Alliance is a lonely reminder of a day when horses were a real part of traffic and sometimes needed a friend.

The surviving trough is at S. E. Tenth and Scott streets—still used, but rarely by a thirsty horse.

For some residents of the area it is a water supply source. Dogs occasionally lap at the small basins provided for them at the base.

A gray granite structure with bowl six inches thick and six feet in diameter, the Scott street trough is one of two Ensign fountains presented in 1906 to the city through the local Humane Alliance (later called the Humane Society).

The other stood for many years at S. E. Sixth street and Hartford avenue.

Bronze Plate

Each bore a bronze plate designating the fountain as a gift of the National Humane Alliance honoring its founder, Herman Lee Ensign.

The Hartford avenue fountain tipped off its base many years ago and Owen Crist per-



THE DEAN



MRS. GRAY



MRS. COWPER

sued the Humane Society that it would serve more horses at his home at 3800 Park ave. than at the Hartford address.

The Crists maintain a riding ring, which is used by several local drill teams. Members for many years watered their mounts at the old trough, but in recent years it has been disconnected after some of the pipes rusted out, said Mrs. Crist. It still stands in the Crist front yard.

A third trough, smaller and more ornate, with basins at the foot for dogs and cats, once stood on Cottage Grove avenue about where Harding road intersected before the Des Moines Freeway went through. It long ago disappeared from the scene and the record.

This trough was placed there in 1912 by the late Dean

Holmes Cowper and his wife as a memorial to a son who had died in infancy. Cowper was dean of Drake University's Fine Arts School, a fine singer, remembered by many today as a witty, lovable man.

Mrs. Cowper also was a musician, an organist for several Des Moines churches, and a great lover of all animals.

Threatened Driver

Her daughters, Mrs. Muriel Parrish and Mrs. Marion Cowper Rae, remember how she'd observe a horse being mistreated and dash from their home to shake a finger at the driver and threaten to report him.

Mrs. Cowper was a charter member of the Animal Rescue League and, through a common concern for animals, became friends with the league's founder, Mrs. Lela Gray (whose daughter, Mrs. Gladys

Gray, is on the present league board).

Those two and other league pioneers worked to raise funds—sometimes giving benefit bridge parties.

Collected Strays

They even collected strays themselves before a truck was donated to the league. Before her death in 1946, Mrs. Gray purchased property next to the league's present location, 919 Fourteenth st., and deeded it to the organization.

Dean Cowper backed his wife in her humane projects in public but teased her at home, Mrs. Parrish recalled, often referring to the two colleagues as "Dog" Cowper and "Cat" Gray.

The Dean would shake his head in mock despair, say: "If I only could bark instead of sing, I'd have it made here at home."



MEMORIES—Old Trough at Southeast Tenth and Scott streets revives memories of thirsty horses, dogs and cats—and of some of the women who befriended them.

At G. O. P. Parley: 400 Headaches

SAN FRANCISCO, CAL. (AP)

The Red Cross treated more than 400 persons for headaches in the Cow Palace during the Republican national convention.

Also treated were 17 cases of exhaustion, four heart attacks, three cases of hypertension, one stiff neck and two cases of vocal strain.

STORM FELLS 100 TREES

(BY THE ASSOCIATED PRESS)

A fierce summer storm pounded parts of the midwest Saturday and heat and humidity kept most of the nation uncomfortable.

Winds blew down more than 100 trees at Columbus, Wis., north of Madison, the Weather Bureau said. A 4.15-inch cloudburst drenched West Bend, Wis.

Gusts up to 60 miles an hour lashed northern and southern suburbs of Chicago.

At Ripley, Miss., Friday night, a freak thunderstorm blew down a tent at a revival meeting, killing an 11-year-old girl. Some 30 other persons were reported injured.

Car Down Drain

ST. PAUL, MINN. (AP)—

William A. Birdall's car went down the drain—down a storm sewer in a heavy rain. Birdall, 18, got out, but city workers have found only the hood of the car.

Historian Is Dead

CHICAGO, ILL. (AP)—Elmer J. Baker, jr., 75, farm machinery industry historian and former editor and publisher of Farm Equipment News magazine, died Thursday night.

Des Moine's last fountain 1964

Clipped By:



johnwalshderby
Mon, Jul 20, 2020

Horse and Buggy Age Lingers on; City Still Maintains 4 Horse-Watering Troughs

By Don Allen.

The horse and buggy age hasn't entirely vanished in Des Moines.

The municipal budget, in fact, continues to recognize that horses still exist in these parts and that their thirsts must be quenched.

Set Aside \$125.

For years the multi-million dollar city budget has set aside \$125 for "water troughs." About half that amount actually is spent each year by the parks department to maintain these drinking places.

Water is supplied by the Des Moines water works. Each outlet is metered, but payment is made through a blanket charge made the city for fire hydrant and other uses of water.

Once there were 15 troughs or fountains in various parts of the city, all of them installed or donated by the Humane society, formerly the Humane alliance.

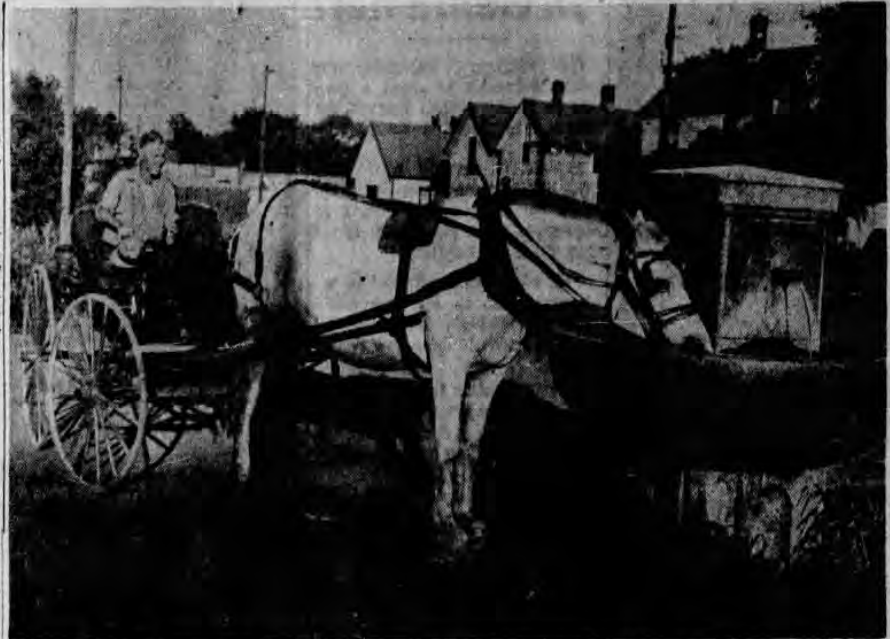
Standing Committee.

The alliance had a standing committee whose members regularly inspected the fountains and made recommendations about installation of new ones. Records of the alliance are filled with references to the water troughs, said Mrs. Ruth Hill, assistant secretary.

Only four of the 15 troughs or fountains remain. Three of them—at S. E. Fifth and Elm, E. Sixteenth and Walker and S. E. First and Willow streets—are rough wooden tanks.

The fourth, at S. E. Tenth and Scott streets, is a massive gray granite structure with a bowl six feet in diameter and walls nearly six inches thick.

Water flows constantly from a



Darl Weatherly gives Queen a drink at city trough at Tenth and Scott streets.

spout into the bowl. At the foot of the fountain are four water-filled cups for dogs and cats.

Used by People.

Probably more people than animals now depend on this fountain. Many families in the neighborhood, lacking wells or city water service, get their daily supplies by the pailful from the flowing spout.

Recently some southeast side residents have been driving their cars to the fountain and using the water for wash jobs.

This has turned to mud the well-beaten earth around the big bowl. Earl Rostberg, who

maintains the fountains for the parks department, had to erect a sign warning against auto laundering there.

The Scott street watering place is one of two Ensign fountains presented to the city through the local Humane Alliance in 1906. The other stood for many years at S. E. Sixth street and Hartford avenue.

Bronze Plate.

Each bore a bronze plate relating that the fountain was a gift of the National Humane Alliance honoring its founder, Herman Lee Ensign.

Someone, sometime, made away

with the plate attached to the Scott street fountain.

The Hartford avenue fountain, of the same size and shape, passed into the hands of Owen Crist, 3800 Park ave., several years ago.

It had tipped off its base and Crist persuaded the Humane society that it would serve more horses at his country home than at the Hartford street address.

Riders of the Flying Hoofs drill team are among those who water their mounts at the Ensign fountain in the Crist yard.

Des Moines Fountains in 1950

Clipped By:



johnwalshderby
Sun, Nov 10, 2019



REGISTER PHOTO BY W. L. TAYLOR

The Last Trough

Sherry Tharp, 10, fills a container with water from the old granite water trough at S.E. Tenth and Scott streets here Wednesday. The trough, which is the only source of water for some residents in the area, may become obsolete under plans for extending water mains into the area. The trough, which dates back to 1906, is the last of 15 that once existed in Des Moines.

Last days of fountain at S.E. Tenth and Scott 1974-06-13

Clipped By:



johnwalshderby
Mon, Apr 12, 2021

AT S. E. 10TH AND SCOTT

Horse Trough Is Lone Survivor

By Lillian McLaughlin

The last of 15 watering troughs installed in Des Moines by the Humane Alliance is a lonely reminder of days when horses were a real part of traffic and sometimes needed a friend.

The surviving trough is at S. E. Tenth and Scott streets—still used, but rarely by a thirsty horse.

For some residents of the area it is a water supply source. Dogs occasionally lap at the small basins provided for them at the base.

A gray granite structure with bowl six inches thick and six feet in diameter, the Scott street trough is one of two Ensign fountains presented in 1906 to the city through the local Humane Alliance (later called the Humane Society).

The other stood for many years at S. E. Sixth street and Hartford avenue.

Bronze Plate

Each bore a bronze plate designating the fountain as a gift of the National Humane Alliance honoring its founder, Herman Lee Ensign.

The Hartford avenue fountain tipped off its base many years ago and Owen Crist per-



THE DEAN



MRS. GRAY



MRS. COWPER

sued the Humane Society that it would serve more horses at his home at 3800 Park ave. than at the Hartford address.

The Crists maintain a riding ring, which is used by several local drill teams. Members for many years watered their mounts at the old trough, but in recent years it has been disconnected after some of the pipes rusted out, said Mrs. Crist. It still stands in the Crist front yard.

A third trough, smaller and more ornate, with basins at the foot for dogs and cats, once stood on Cottage Grove avenue about where Harding road intersected before the Des Moines Freeway went through. It long ago disappeared from the scene and the record.

This trough was placed there in 1912 by the late Dean

Holmes Cowper and his wife as a memorial to a son who had died in infancy. Cowper was dean of Drake University's Fine Arts School, a fine singer, remembered by many today as a witty, lovable man.

Mrs. Cowper also was a musician, an organist for several Des Moines churches, and a great lover of all animals.

Threatened Driver

Her daughters, Mrs. Muriel Parrish and Mrs. Marion Cowper Rae, remember how she'd observe a horse being mistreated and dash from their home to shake a finger at the driver and threaten to report him.

Mrs. Cowper was a charter member of the Animal Rescue League and, through a common concern for animals, became friends with the league's founder, Mrs. Lela Gray (whose daughter, Mrs. Gladys

Gray, is on the present league board).

Those two and other league pioneers worked to raise funds—sometimes giving benefit bridge parties.

Collected Strays

They even collected strays themselves before a truck was donated to the league. Before her death in 1946, Mrs. Gray purchased property next to the league's present location, 919 Fourteenth st., and decided it to the organization.

Dean Cowper backed his wife in her humane projects in public but teased her at home, Mrs. Parrish recalled, often referring to the two colleagues as "Dog" Cowper and "Cat" Gray.

The Dean would shake his head in mock despair, say: "If I only could hark instead of sing, I'd have it made here at home."



MEMORIAL
thirsty horse

At G. O. P. Parley: 400 Headaches

SAN FRANCISCO, CAL. (AP)

—The Red Cross treated more than 400 persons for headaches in the Cow Palace during the Republican national convention.

Also treated were 17 cases of exhaustion, four heart attacks, three cases of hypertension, one stiff neck and two cases of vocal strain.

STORM

A fierce storm on Saturday and Sunday was not so comfortable.

Winds blew north of Madison burst drenched.

Gusts up to suburbs of Chicago.

At Ripley, down a tent and \$200 other.

A @ Owen Crist repaired B @ 10th & Hartford

Clipped By:



lunab916
Sat, Apr 10, 2021

PH #36 #96X

DATA SHEET

UNITED STATES DEPARTMENT OF THE INTERIOR
NATIONAL PARK SERVICE

FOR NPS USE ONLY
RECEIVED APR 19 1976
DATE ENTERED OCT 8 1976

NATIONAL REGISTER OF HISTORIC PLACES INVENTORY -- NOMINATION FORM

SEE INSTRUCTIONS IN *HOW TO COMPLETE NATIONAL REGISTER FORMS*
TYPE ALL ENTRIES -- COMPLETE APPLICABLE SECTIONS

1 NAME

HISTORIC

John
Old Southeast Water Trough

AND/OR COMMON

Old Trough

2 LOCATION

STREET & NUMBER

Southeast 11th and Scott St.

___ NOT FOR PUBLICATION

CITY, TOWN

Des Moines

CONGRESSIONAL DISTRICT

Fifth 04

STATE

Iowa

___ VICINITY OF
CODE

COUNTY

Polk

CODE
153

3 CLASSIFICATION

CATEGORY

___ DISTRICT

___ BUILDING(S)

STRUCTURE

___ SITE

___ OBJECT

OWNERSHIP

PUBLIC

___ PRIVATE

___ BOTH

PUBLIC ACQUISITION

___ IN PROCESS

___ BEING CONSIDERED

STATUS

OCCUPIED

___ UNOCCUPIED

___ WORK IN PROGRESS

ACCESSIBLE

___ YES: RESTRICTED

YES: UNRESTRICTED

___ NO

PRESENT USE

___ AGRICULTURE

___ COMMERCIAL

___ EDUCATIONAL

___ ENTERTAINMENT

___ GOVERNMENT

___ INDUSTRIAL

___ MILITARY

___ MUSEUM

___ PARK

___ PRIVATE RESIDENCE

___ RELIGIOUS

___ SCIENTIFIC

___ TRANSPORTATION

OTHER:

4 OWNER OF PROPERTY

NAME

City of Des Moines

STREET & NUMBER

East First and Grand

CITY, TOWN

Des Moines

___ VICINITY OF

Iowa

STATE

5 LOCATION OF LEGAL DESCRIPTION

COURTHOUSE,
REGISTRY OF DEEDS, ETC.

Polk County Courthouse Title or Survey

STREET & NUMBER

500 Mulberry

CITY, TOWN

Des Moines

STATE

Iowa

6 REPRESENTATION IN EXISTING SURVEYS

TITLE

DATE

___ FEDERAL ___ STATE ___ COUNTY ___ LOCAL

DEPOSITORY FOR
SURVEY RECORDS

CITY, TOWN

STATE

7 DESCRIPTION

CONDITION

EXCELLENT DETERIORATED
 GOOD RUINS
 FAIR UNEXPOSED

CHECK ONE

UNALTERED
 ALTERED

CHECK ONE

ORIGINAL SITE
 MOVED DATE _____

DESCRIBE THE PRESENT AND ORIGINAL (IF KNOWN) PHYSICAL APPEARANCE

The Old Southeast Watering Trough is a six-foot granite structure composed of a rectangular shaft or column and a large 6' bowl and two small dispensing pipes. Four small cups appear at the base to provide refreshment for fauna. The fountain rests on a base of tiles at an intersection of streets in a fast deteriorating neighborhood of Des Moines.

8 SIGNIFICANCE

PERIOD	AREAS OF SIGNIFICANCE -- CHECK AND JUSTIFY BELOW			
<input type="checkbox"/> PREHISTORIC	<input type="checkbox"/> ARCHEOLOGY-PREHISTORIC	<input type="checkbox"/> COMMUNITY PLANNING	<input type="checkbox"/> LANDSCAPE ARCHITECTURE	<input type="checkbox"/> RELIGION
<input type="checkbox"/> 1400-1499	<input type="checkbox"/> ARCHEOLOGY-HISTORIC	<input type="checkbox"/> CONSERVATION	<input type="checkbox"/> LAW	<input type="checkbox"/> SCIENCE
<input type="checkbox"/> 1500-1599	<input type="checkbox"/> AGRICULTURE	<input type="checkbox"/> ECONOMICS	<input type="checkbox"/> LITERATURE	<input type="checkbox"/> SCULPTURE
<input type="checkbox"/> 1600-1699	<input type="checkbox"/> ARCHITECTURE	<input type="checkbox"/> EDUCATION	<input type="checkbox"/> MILITARY	<input checked="" type="checkbox"/> SOCIAL/HUMANITARIAN
<input type="checkbox"/> 1700-1799	<input type="checkbox"/> ART	<input type="checkbox"/> ENGINEERING	<input type="checkbox"/> MUSIC	<input type="checkbox"/> THEATER
<input type="checkbox"/> 1800-1899	<input type="checkbox"/> COMMERCE	<input type="checkbox"/> EXPLORATION/SETTLEMENT	<input type="checkbox"/> PHILOSOPHY	<input type="checkbox"/> TRANSPORTATION
<input checked="" type="checkbox"/> 1900-	<input type="checkbox"/> COMMUNICATIONS	<input type="checkbox"/> INDUSTRY	<input type="checkbox"/> POLITICS/GOVERNMENT	<input type="checkbox"/> OTHER (SPECIFY)
		<input type="checkbox"/> INVENTION		

SPECIFIC DATES 1906

BUILDER/ARCHITECT

STATEMENT OF SIGNIFICANCE

The Old Southeast Watering Trough is a survivor of the horse and buggy age. It is a visible reminder of an earlier period of public utilities technology designed to meet mass needs prior to the introduction of indoor plumbing. Places such as these served a social function as well, for they provided focal points where a community's residents engaged in social exchange.

This is one of the last of 15 horse watering troughs installed around Des Moines by the Iowa Humane Alliance, established in 1883. As one of two Ensign fountains presented to the city in 1906, this structure still provided water for an area of Des Moines referred to as the "Southeast Bottoms". It was presented to the city by the National Humane Alliance, to honor their founder, Herman Lee Ensign. The other fountain presented by the Society was located at S.E. 6th and Hartford Avenues, and was later moved close to the entrance of Owen Crist Farm, 3800 Park Ave.

Increased interest by the citizens of the area and the Des Moines City Council has led to the desire to have the water trough preserved as a neighborhood landmark.

9 MAJOR BIBLIOGRAPHICAL REFERENCES

Hyde, John, "End of 'Water-Trough' Era in Southeast Des Moines Seen," Des Moines Register, 13 June, 1974.
 Pratt, Leroy. Discovering Historic Iowa. Des Moines: Dept. of Public Instruction, 1975.

10 GEOGRAPHICAL DATA

ACREAGE OF NOMINATED PROPERTY less than one acre
 UTM REFERENCES

A	1,5	4,5,0	0,3,5	4,6,0,3	4,1,0	B			
	ZONE	EASTING	NORTHING				ZONE	EASTING	NORTHING
C						D			

VERBAL BOUNDARY DESCRIPTION

Northeast corner of the intersection of S.E. 11th and Scott Streets

LIST ALL STATES AND COUNTIES FOR PROPERTIES OVERLAPPING STATE OR COUNTY BOUNDARIES

STATE	CODE	COUNTY	CODE

11 FORM PREPARED BY

NAME / TITLE Richard Wilkey, City Manager
 ORGANIZATION City of Des Moines DATE 16 July 1974
 STREET & NUMBER East 1st and Locust Streets TELEPHONE
 CITY OR TOWN Des Moines STATE Iowa

12 STATE HISTORIC PRESERVATION OFFICER CERTIFICATION

THE EVALUATED SIGNIFICANCE OF THIS PROPERTY WITHIN THE STATE IS:

NATIONAL STATE LOCAL

As the designated State Historic Preservation Officer for the National Historic Preservation Act of 1966 (Public Law 89-665), I hereby nominate this property for inclusion in the National Register and certify that it has been evaluated according to the criteria and procedures set forth by the National Park Service.

STATE HISTORIC PRESERVATION OFFICER SIGNATURE Adrian N. Anderson
 TITLE Director, Div. of Historic Preservation DATE April 14, 1976

FOR NPS USE ONLY

I HEREBY CERTIFY THAT THIS PROPERTY IS INCLUDED IN THE NATIONAL REGISTER

Jerry L. R... DATE 10/8/86
 DIRECTOR, OFFICE OF ARCHEOLOGY AND HISTORIC PRESERVATION
 ATTEST: [Signature] DATE 10/7/76
 KEEPER OF THE NATIONAL REGISTER



GARY FANDEL/FOR THE REGISTER

City has funds for neighborhood projects

\$25,000 is available from the city's neighborhood streetscape program for beautification projects.

By LISA COLONNO
lcolonno@dmreg.com

A historic marble horse watering trough and new neighborhood signs are two of the seven Des Moines neighborhood projects that received funding in 2008 from the city's neighborhood streetscape grant program.

Now the Des Moines Parks and Recreation Department is looking for neighborhood beautification proposals for 2009.

A total of \$25,000 is available through the grant program that helps neighborhood-based groups strengthen their area's appearance with permanent physical improvements on city property.

Kristi Lund Lozier's Greenwood Historic neighborhood is using the \$7,500 it received to help restore and install a more than 100-year-old trough near the north entrance of Water Works Park. The Buckeye Fountain Garden will sit in

the triangle-shaped Buckeye Park located at the junction of John Lynde Road and Mahaska Parkway and include landscaping to become a focal point in the neighborhood located south of Grand Avenue.

"It's such a satisfying feeling to know that you are doing something for the greater good, not just for your own yard, but for the greater good of the neighborhood and for people who are just visitors," Lozier said. "Everything about a project like this is a win-win. Everybody wins because of the friendships, the community, the working together."

Applications are due by 4 p.m. Jan. 15 at the Parks and Recreation Department. To be eligible for a grant, projects must result in an improved appearance to the neighborhood that positively affects a significant number of residents, applicants should be from a recognized neighborhood association and that organization should be willing to make a long-term commitment to the project.

Street lighting improvements, drinking fountains and benches, community art

BEAUTY, PAGE 9



Lincoln Place is DM A

Clipped By:



lunab916
Sat, Apr 10, 2021

PREP SPORTS AT A GLANCE Roosevelt and West Des Moines Dowling Catholic on [Page 7](#).

From horse trough to planter

Residents in Greenwood area save a bit of history and give it a future

By Heidi Pierson
community@dmreg.com

Just south of Grand Avenue after 31st Street turns into Lincoln Place Drive sits a triangular piece of history that unites a neighborhood. What originally was used as a horse trough in the early 1900s is now a sprawling planter in the midst of an intersection.

"It's been a long time coming," said Kevin Conlan, who has lived in the Greenwood Historic neighborhood since 1997. He said the trough was moved to the intersection about 10 years ago and was originally used as a decorative water fountain.

Although the city owns the property, the neighbors maintain it. When the fountain functioned, a neighbor actually paid the water bill.

But it cost "five to six times as much as a regular water bill," said Conlan, though he was not the one who paid it. Because of the high cost, the trough had not been operating for the past few years.

This year, thanks to a private donor, neighbors completed a project that included repurposing the trough as a planter. A group of neighbors, including Kathy Fehrman, who lives on St. Johns Road, take turns watering the plants.

"It takes about a half hour to water the park," said Fehrman, whose day to water is Saturday.



The horse trough has been turned into a planter to dress up a patch of land in the Greenwood Historic neighborhood. KEVIN CONLAN/SPECIAL TO THE REGISTER

See TROUGH, Page 2

Closures | **Fall Festival**

DM A - private donor

Clipped By:



lunab916
Sat, Apr 10, 2021

February 1, 2016

1900s Water Trough Still Flowing

In the early 1900s, Des Moines was still a predominantly horse and buggy town. Several organizations, in an effort to ease the strain on horses, built two public water troughs and then gave them to the City of Des Moines. Over the years, the water troughs became obsolete as automobiles became the common mode of transportation.



The original locations of the two water troughs were at 8th and Cherry and Penn and Grand, most likely in the middle of the intersections. Their original locations were selected with the approval of the National Humane Alliance and subsequently, was the reason they were moved. Apparently, they caused too much congestion when buses, trucks, and autos came along. The city council ordered their removal and for a while, they were stored. At some time after 1915, one was moved to SE 10th and Scott Avenue and the other moved to SE 6th and Hartford.

The Southeast Water Trough at Sam Cohen Park was placed on the National Register of Historic Places in 1976. Through the decades and even today, the trough is still dispensing water, albeit now as a fountain. Water pours from two lion heads into the horse trough. At the base, four smaller water-filled troughs allowed smaller animals to drink. Water also flowed from a small alcove above the horse trough.

Posted by: Laura Sarcone

[3 Comments](#)

Labels: [Des Moines Water Works](#), [Des Moines waterworks](#), [DMWW](#), [Southeast Water Trough](#) Posted in [History](#)